

## LINTECH's Conveyor Hoods

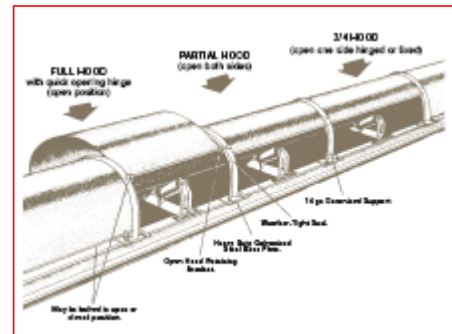


**PT. LINTECH DUTA PRATAMA** designed and fabricated conveyors hoods from various gauges of **G-90 galvanized steel** (22ga; 20ga; 18ga), **aluminum** (16ga; 3003 utility; 5052 marine duty), **stainless** (20ga; SS304; SS316) or **carbon steel**.

Custom-curved covers in many different profile configurations may be used wherever covered conveyor systems are required for weather protection or air pollution control. The Curve line process turns standard metal building panels - including economical 7/8" corrugated profiles - into highly rigid, self-supporting covers. Panels in 20-26 GA steel may be used to create 180-degree clear spans or to produce virtually any other desired radii and angles of curvature, eliminating the need for structural framing.

## Customized & Standard Heavy Duty Hoods

- ✓ **FULL HOOD:** 180°; provides the maximum safety for personnel from moving parts, extending the wear life of your covered components such as idlers & belt by protecting them from the rain, snow & sun. This hood type is both efficient and environmentally friendly, suppressing dust and reducing material loss due to high winds.
- ✓ **3/4 HOOD:** same as the full hood, but with one side permanently opened at a 45° angle.
- ✓ **PARTIAL HOOD:** same as the 3/4 hood, but with both sides permanently opened at a 45° angle.



### STANDARD model

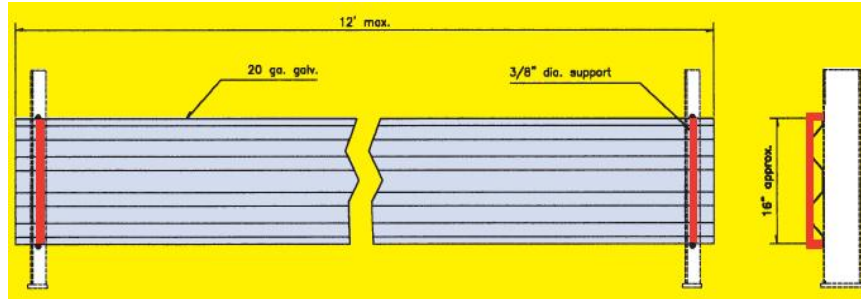
Allows easy belt & idler maintenance; simply loosen the wing nuts on the opening side eyebolts, raise the hood and lock into the retaining brackets for servicing.



### INSTANT OPENING model

Originally developed for the pulp & paper industry, features the quickest method of access to the conveyor belt & idlers. The opening side of the hood is held into place by two 90° rods roll formed into the end of the sheet, which can be quickly rotated and slipped into or out of a receiving hole in the support bands.

**CORRUGATED WIND GUARDS** can be installed on either side of the conveyor structure to shield the return belt from high winds. Panels are made from 20ga G-90 galvanized steel and overlap forming a tight seal.

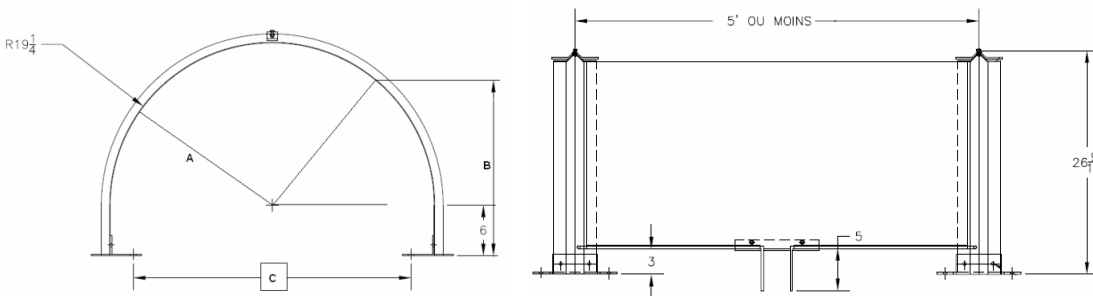


**WE CUSTOMIZE YOUR HOODS** to suit the application and welcome all special requests:

- odd shapes hoods for convex & concave areas
- holes in bands for pull cord eyebolts or sprinkler pipes
- extended down to cover return belt
- side mounting base plate
- flexible canvas for hinged sections
- holes for idler lubrication



**STANDARD SPECIFICATIONS**



Belt Width	A	B	C	Weight (Lbs) per section			
				Galvanized 22ga hood 14ga band G-90		Aluminum 16ga hood 8ga band	
				4 ft\5ft (full type)	4 ft\5ft (3/4 type)	4 ft\5ft (full type)	4 ft\5ft (3/4 type)
18"	16 1/4"	19 1/4"	27"	44/51	42/48	23/27	20/23
24"	19 1/4"	21 7/8"	33"	49/57	47/54	26/30	22/26
30"	22 1/4"	24"	39"	55/64	52/60	29/34	25/28
36"	25 1/4"	26 1/8"	45"	60/70	57/66	32/37	27/31
42"	28 1/4"	28 1/4"	51"	66/77	62/72	35/41	30/34
48"	31 1/4"	30 3/8"	57"	71/83	67/77	38/44	32/37
54"	34 1/4"	32 1/2"	63"	77/90	72/83	41/48	34/39
60"	37 1/4"	34 5/8"	69"	82/97	77/89	43/51	37/42
66"	40 1/4"	36 3/4"	75"	90/106	82/96	46/55	39/44
72"	43 1/4"	38 7/8"	81"	93/110	86/101	49/58	41/48

**INSTALLATION**

- 1 - Drill holes in conveyor frame using the base plate for a template.
- 2 - Mount base plates to support band.
- 3 - Mount retaining bracket to support band.
- 4 - Bolt support bands on conveyor with retaining brackets on side where service will be made.
- 5 - Mount hoods to support bands by bolting eyebolts to base plates.

Conveyor Wind Covers

**PT. LINTECH DUTA PRATAMA**

WIRA JATIM INDUSTRIAL ESTATE  
 Jl. Mastrip 70 Karang Pilang – Surabaya INDONESIA 60221  
 Telp. : +62 31 7666891  
 Fax. : +62 31 7664604