

## GS-4000 CNC FLAME CUTTING MACHINE

The specialized machine to cut steel plates. The running of this machine is based on its CNC system to control the numerical-controlled gun into work as program rule guides, to process the steel plate into the shapes wanted.

Dimension/capacity :

- Transversal span : 4000mm
- Length of rail : 15000mm
- Speed of cutting : 50 to 2000mm per min
- CNC torch : 2 sets
- Combustion gas : oxygen, propane, acetylene
- Effective cutting width : 80-3300mm
- Effective cutting length : 13500mm
- Quick back speed : 10000mm/min



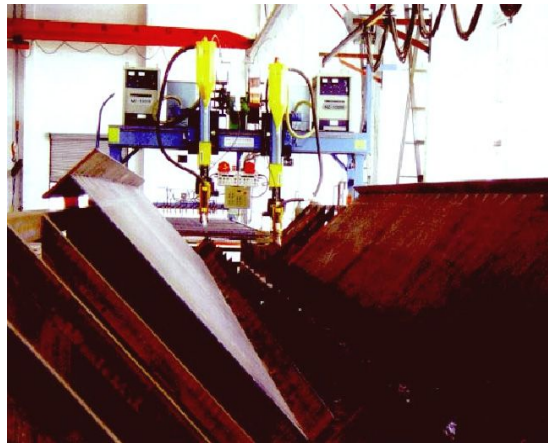
## LINTECH INVEST NEW WELDED BEAM LINE

Owner : PT.Lintech Duta Pratama

Commissioning Date : 15 December 2010

Dimension/capacity :

- **Size of web plate**
  - Height : 200 - 1500mm
  - Thickness : 6 - 32mm
  - Length : 3000 - 15000mm
- **Size of flange plate**
  - Width : 200 - 600mm
  - Thickness : 6 - 40mm
  - Length : 3000 - 15000mm



**Investment Justification:**

Lintech's Global Customer are often use several different standards such as JIS - SS (japanese), AS (Australian), EN (European) and ASTM (American), and others. For sections steel that are not available in Local Indonesia market, We have to import them from overseas that causing long lead time and extra cost.

Requesting for revision to the original engineering design for substitution section steel size also required so much engineering efforts and time loss. The solution is to make the beam by welding process only for the members that are not available in the market (usually 10percent only). With this new investment, Lintech has positioned it self properly (considered as the best) at the competitive global steel fabrication market at best quality.